



The Inputs you provided to generate this report

Daily Outbound Orders	700
Daily Outbound Lines	20000
Units per line	1.3
Hours per day spent on picking	24
Storage capacity based on bins or SKUs	Bins
Required Storage Capacity	35000
Building height unit	Feet ft
Building Height	26
Country of Installation	United States
Currency	USD



You'll need 34 robots in your Cubic Storage System and 15 staff members to automate your fulfillment operation.

Cubic Storage System Capacity

# of Robots	34	Robots
# of Goods-To-Person Stations	3	Units
# Goods-In Stations	2	Units
Bin Storage Capacity	35426	Bins
SKU Storage Capacity	28341	SKUs

Cubic Storage System Performance

Lines/h	850	Lines/h
Units/h	1350	Units/h
Orders/h	30	Orders/h
Lines/Day	20400	Lines/day
Units/Day	32400	Units/Day
Orders/Day	720	Orders/day
# of Operators	15	FTE
FTE Reduction compared to manual operation	117	FTE
Max. System Performance Lines/Day	20400	Lines/day

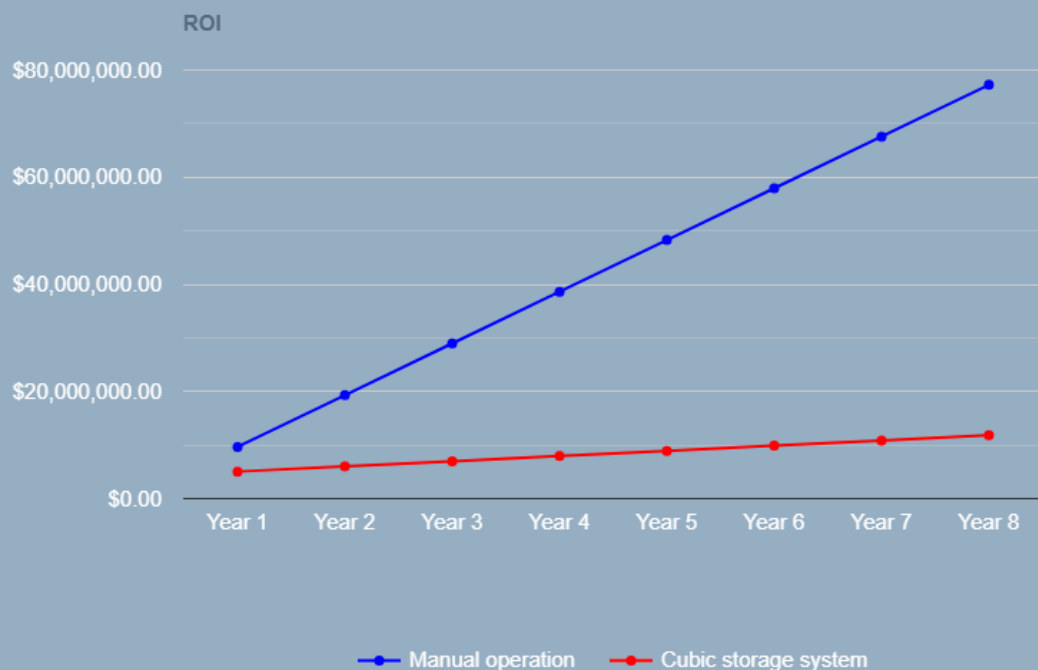


ROI in 1-3 Years

Cubic Storage System Investment

ROI	ROI in 1-3 Years	Years
Investment Cubic Storage System (delivered & installed)	\$ 5,050,000.00	USD
# of Operators required	15	FTE
Total FTE Reduction	117	FTE
Annual Operational Cost Savings	\$ 8,689,000.00	USD
Project Implementation Time	9	Months

*During detail design phase the following will be further evaluated: Transportation cost, site survey, floor slab requirements, server architecture, power, permits and fire suppression

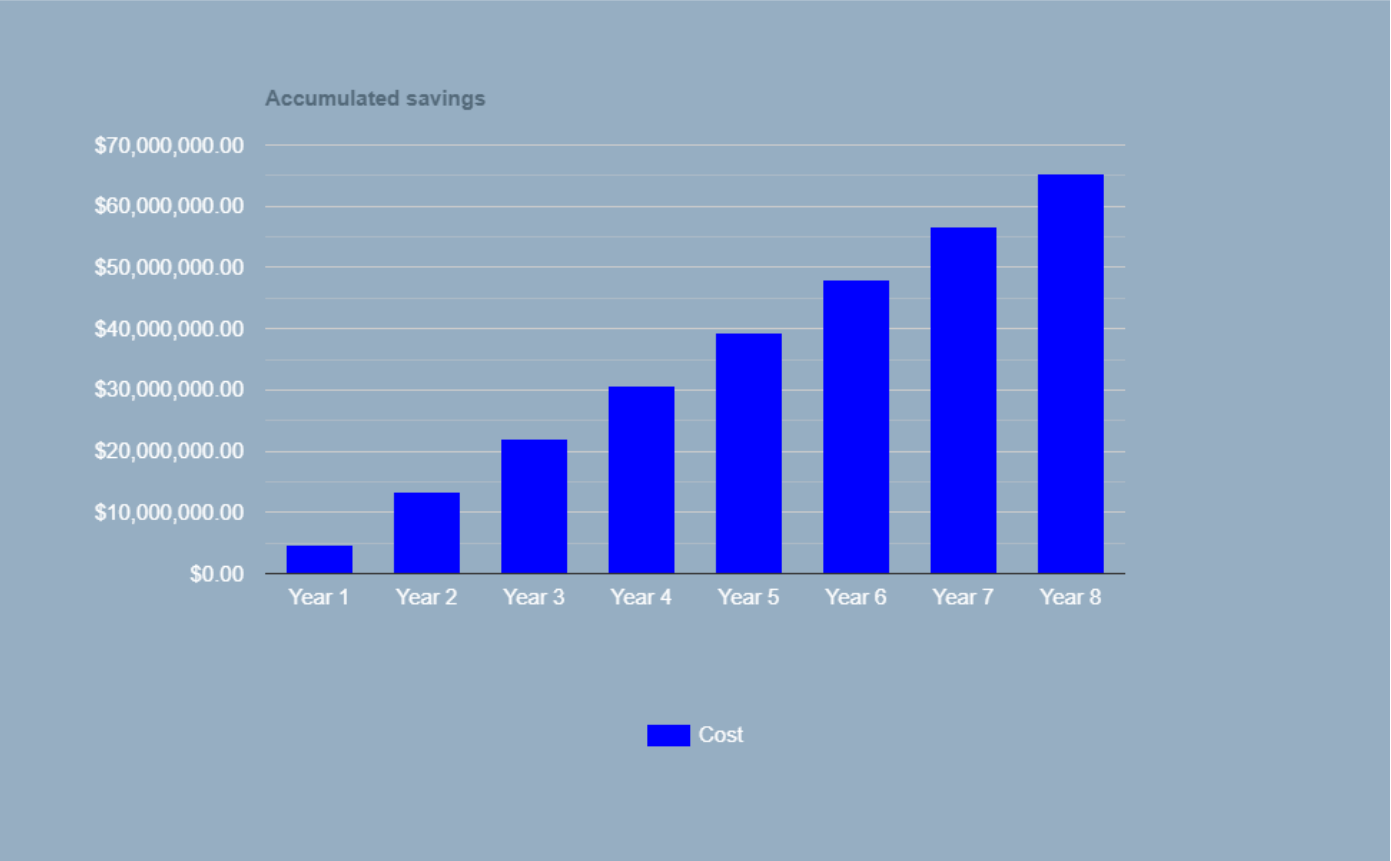


Cubic storage
system

Manual operation

Annual Cost Savings

Year 1	\$ 5,050,000.00	\$ 9,654,480.00	\$ 4,604,480.00
Year 2	\$ 6,015,895.04	\$ 19,308,960.00	\$ 13,293,064.96
Year 3	\$ 6,981,790.07	\$ 28,963,440.00	\$ 21,981,649.93
Year 4	\$ 7,947,685.11	\$ 38,617,920.00	\$ 30,670,234.89
Year 5	\$ 8,913,580.15	\$ 48,272,400.00	\$ 39,358,819.85
Year 6	\$ 9,879,475.19	\$ 57,926,880.00	\$ 48,047,404.81
Year 7	\$ 10,845,370.22	\$ 67,581,360.00	\$ 56,735,989.78
Year 8	\$ 11,811,265.26	\$ 77,235,840.00	\$ 65,424,574.74

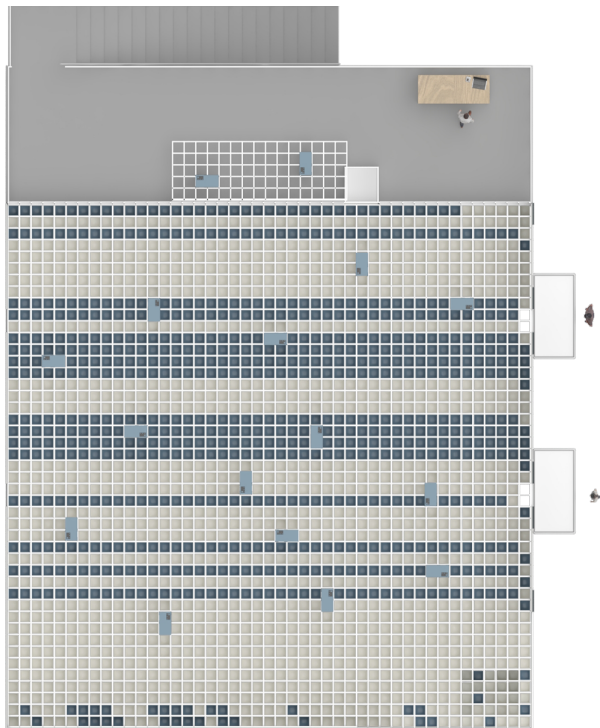




The total footprint of your system will be 9602SF.

Cubic Storage System Layout

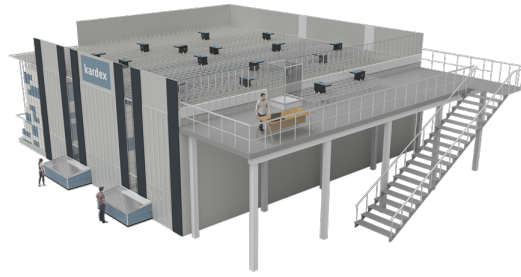
System Length	117.1	ft
System Width	82	ft
System Height excl. Maintenance Access	17.1	ft
Total System Footprint	9602	SF



Length: 117.1ft

Width: 82ft

Height: 17.1ft



Length: 117.1ft

Width: 82ft